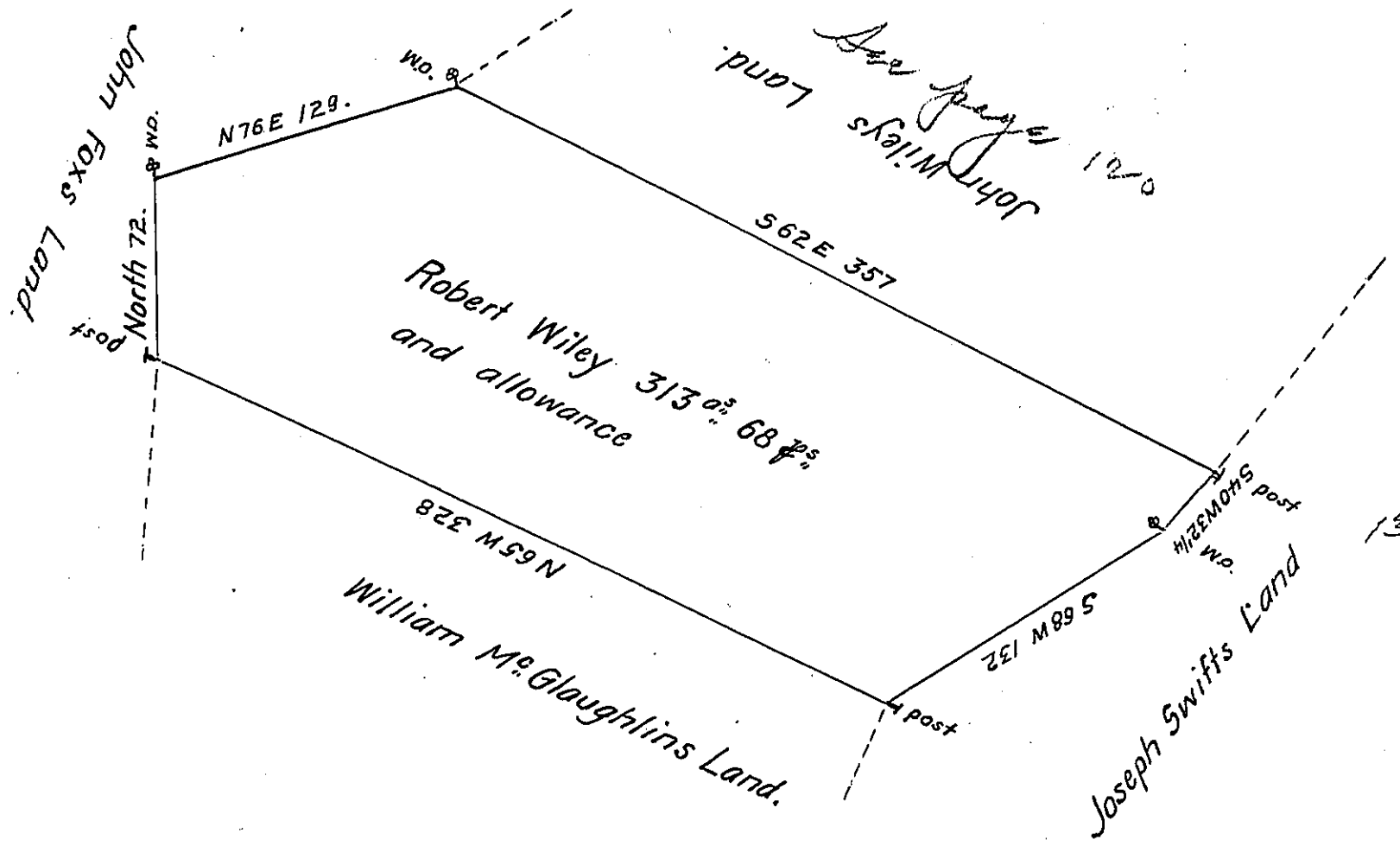


FORM NO. 1.



In pursuance of a Warrant dated Dec. 29<sup>th</sup> 178(obl) there was Survey'd for Robert Wiley the above described Tract of Land containing three hundred and thirteen Acres and 68 perches with an allowance proportioned to Six  $\frac{1}{2}$  Cent. Situate in the Township of Washington in the County of Westmoreland Survey'd Sept. 22<sup>nd</sup> 1785.

To John Lukens Esq. }  
 Surveyor Gen<sup>l</sup> of Penn<sup>a</sup> }

pr John Moore D.S.

IN TESTIMONY that the above is a copy of the original remaining on file in the Department of Internal Affairs of Pennsylvania, made conformably to an Act of Assembly approved the 16th day of February 1833, I have hereunto set my hand and caused the Seal of said Department to be affixed at Harrisburg, this sixth day of August 1907

Henry Howick  
 Secretary of Internal Affairs.